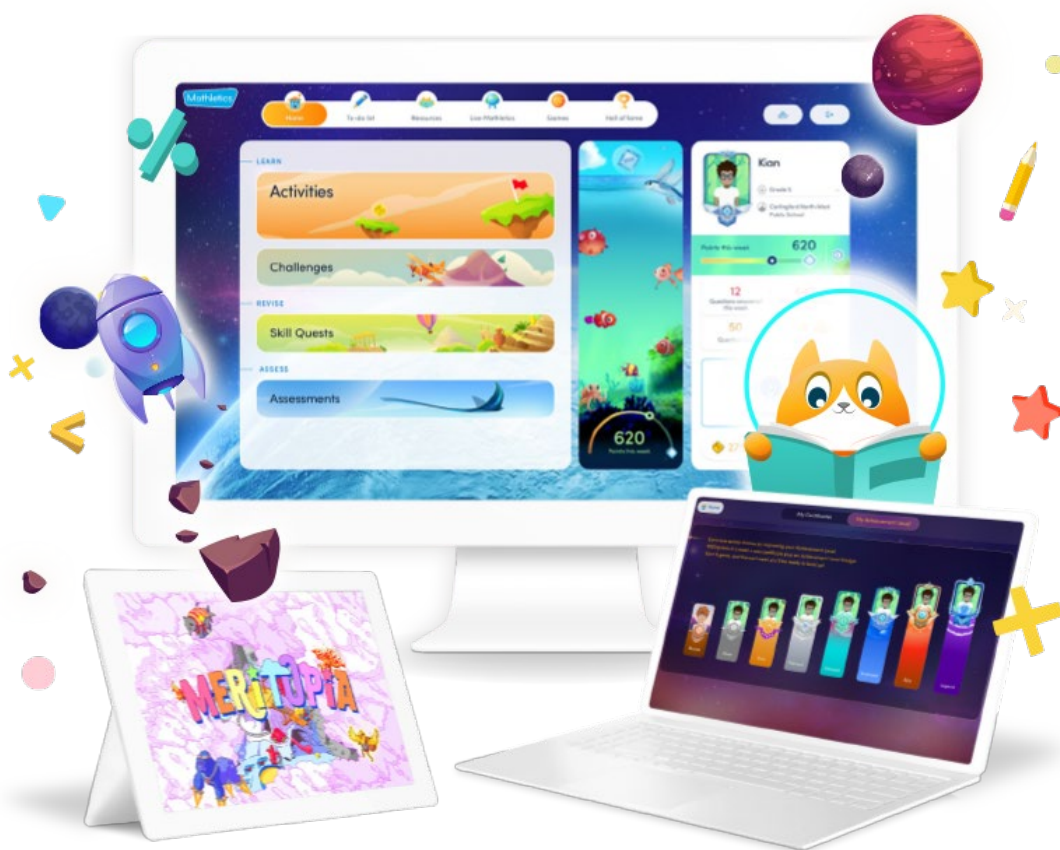


# Mathletics

## Mathletics Professional Development Catalog



October 2025

**What did you learn from today's session to help you integrate Mathletics into your classroom routine?**

**Mathletics**

**I learned many helpful tools that are integrated into Mathletics that I didn't know about before like switching language feature, workbooks, videos, some French resources, etc.!**

Nikera Toma- French immersion teacher- CTSD

**So much!!! I had no idea where to start with Mathletics and now the program is my oyster!**

Zack Hufnagel, Teacher- Diocese of Grand Rapids

**How many different ways we can use Mathletics in the classroom - I'm looking forward to implementing it!**

Bailey Poling, Teacher- Holy Trinity Catholic School

**I was extremely happy with this session today. I know that many teachers have been asking about how to specifically differentiate for students. Thrilled!**

-Kelley Taite, Numeracy Support-School District of Mystery Lake

**Where to find resources to use in all classrooms, how to use those resources to foster growth mindsets and how to encourage and guide students through problem solving and critical thinking tasks.**

Olivia- Notre Dame Catholic Elementary School

# Mathletics

## Let's Accelerate Math Learning!

### Introduction to Mathletics

1 Hr

This session is a getting started experience designed to prepare new partners for a successful launch with students. Teachers will spend time in the student console exploring the solution's gamification pedagogy, activities, data-driven reports, and embedded resources. Teachers will also dive into their personalized Teacher Console and explore the tools available to them.

#### Who should attend?

- Teachers who are new to Mathletics
- Administrators who are new to Mathletics



# The Differentiated Math Classroom

Mathletics

1 HR

This session will focus on how teachers can meet the challenge of serving the needs of all types of learners in their math classrooms. Teachers will explore actionable strategies to use in content, instruction, product, and environment to strengthen student understanding and retention of concepts. We will take an in-depth look at the value and impact of differentiated instruction for student progress and the strategies needed to design effective instruction using the robust online resources.

Who should attend?

- Teachers who have already received introductory training and are looking to use the resource purposefully

## Creating Meaningful Math Stations

1 HR

In this session, teachers will explore math stations as an effective way to allow them to provide small-group instruction to support students' needs following a whole-class lesson and provide students with a purposeful approach to practicing and reviewing various math skills. Teachers will learn how the various resources in Mathletics supports the creation and implementation of effect math stations.

Who should attend?

- Teachers who have already received introductory training and are looking to use the resource purposefully

# Informing Teaching and Learning with Assessment, Intervention and Remediation

Mathletics

1 HR

This session will take a deep dive into the suite of math assessments available on the interactive online platform. Teachers will navigate the range of assessment tools embedded in the learning resources to track student progress and plan instruction across key mathematical skills and standards.

Who should attend?

- Teachers who have already received introductory training and are looking to use the resource to support data-driven decision-making
- Administrators who are interested in learning more about how Mathletics supports teachers in making data-driven decisions about teaching and learning

## Engaging the 21<sup>st</sup> Century Learner

1 HR

In this session teachers will learn how gamification impacts students through feelings of success and failure, as well as frustration and anxiety. Most well-designed games give us pleasure and make us want more. Alternating failure with success is the core concept at the heart of many video games, which is why a growth mindset pedagogy and game-based learning go hand in hand. Teachers will explore the research of how gamification increases student engagement and motivation while nurturing the Growth Mindset.

Who should attend?

- Teachers who have already received introductory training and are looking to find resources for motivating their learners

# Elevating Mathematical Thinking

Mathletics

## A Mathletics Deeper Dive

1 HR

This session will take a deep dive into the concepts of Thinking about Critical Thinking and giving students Problems that are Problematic. Participants will explore the suite of math problem-solving and critical thinking resources available on the interactive online platform and in printable form.

Who should attend?

- Teachers who have already received introductory training and are looking to find resources for challenging all students

## Implementing Mathletics in the Numeracy Classroom

1 HR

You have been introduced to Mathletics, but how do you put it to work in your classroom? This session allows participants to convert practice into practical as they explore a variety of options and review sample lessons that incorporate the elements of Mathletics into classroom routines.

Who should attend?

- Teachers who have received the Mathletics introductory session
- Administrators who wish to support teachers as they implement Mathletics into their classrooms

# Mathletics: Train-the-Trainer Package

## **1 HR-2HR (Dependant upon the Trainer's prior knowledge about Mathletics)**

In this session, key campus personnel overseeing training the faculty will receive an overview of the product, both teacher and student consoles, tips for training staff and 30-day access to a full recording of the Introductory session- to be used for their own learning. They will also receive materials they can use in their training, including a slide deck and printable resources. Finally, trainers will be placed on a communication list to receive pertinent product updates for a 2-year period.

### **Who should attend?**

- **Instructional coaches or individuals responsible for training teachers to use Mathletics**
- **Campus solution champions who are tasked with being the campus Mathletics expert**



## Non-Product Professional Learning

### Insights and Strategies for Successful Social-Emotional and Academic Success

**This informative and interactive session is designed for educators, school administrators, and anyone passionate about fostering the development of students. In today's complex educational landscape, it is increasingly important to equip learners with not only academic knowledge but also essential life skills. This session delves into the Collaborative for Academic, Social, and Emotional Learning (CASEL) competencies, a framework recognized worldwide for promoting social-emotional learning (SEL) in educational settings.**

### Engage Students and Accelerate Learning through Project Based Learning

**Project-based learning, or PBL, is a great approach for engaging students in problem-solving with a purpose while also addressing content standards across subject areas. This session is designed for new and experienced PBL teachers interested in learning more about how to become stronger facilitators using the seven essential project design elements, as well as the project-based teaching practices in their classrooms. It is also ideal for teachers who are just getting started with PBL to strengthen their practices on student engagement and accelerating learning.**

# Mathletics

**Brought to you by:**

**3P Learning**